

DOUBLE FLANGED BUTTERFLY VALVES

DN40-DN2000

MODEL NUMBER: BFVDF-S461



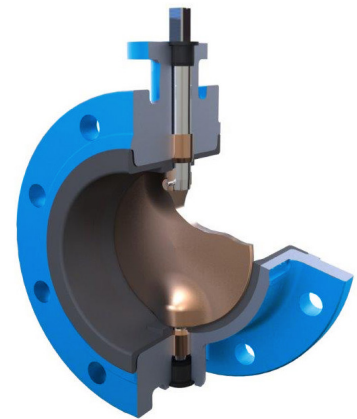
Temp. Range	Flange Drilling	Design Standard	Testing
-10°C to +120°C	BS EN1092-2 PN16	EN593	EN12266

Application

- For flow control and isolation, widely used for clean and treated water applications

Features

- Twin shaft design
- Suitable for end of line duty
- Double flanged series 3 EN558-1 row 13
- Streamlined disc
- High KV/ CV valves
- Vulcanized bonded liner for longer lifetime and lower torque
- ISO EN5211 actuation flange
- ATEX certification



Options

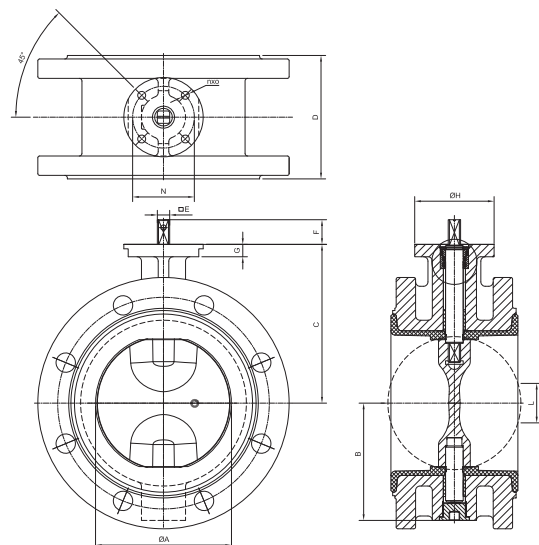
- Under cut Discs (6 bar- 10 bar)
- Various body, disc, shaft and liners available
- PN10, PN16, PN25, BSTD/E, ANSI connections
- Lever/ gearbox operation
- Torque figures available on request

Accessories

- Position indication, limit switches, locking facility, actuation, chain wheel assemblies, extension spindles, floor pillar

Materials

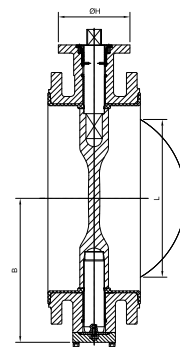
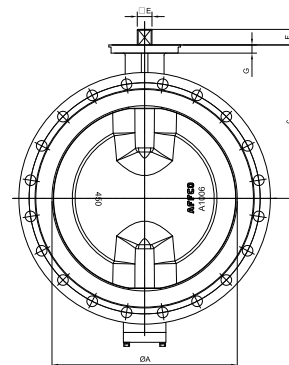
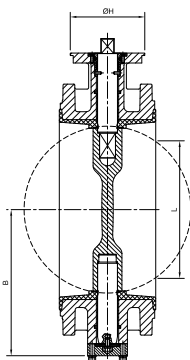
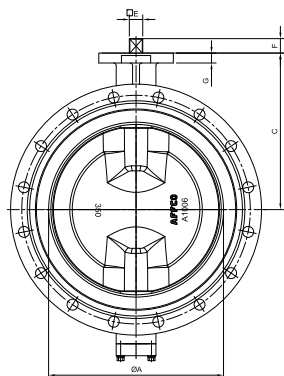
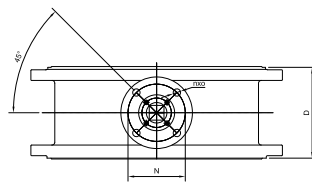
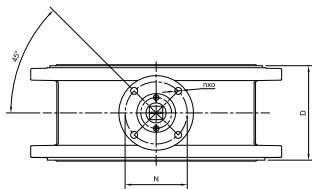
No.	Part Name	Material
1	Body	Ductile Iron, carbon steel, stainless steel, duplex, aluminium bronze, Zinc Bronze
2	Disc	Ductile iron 300 um Rilsan coated, aluminium bronze, bronze, stainless steel, duplex, monel
3	Shaft	Stainless steel, duplex, monel (K500), aluminium bronze
4	Liner	NBR, EPDM, VITON



DN40~DN300



Affco Flow Control (UK) Ltd
 Unit 7, Stafford Park 12, Telford,
 Shropshire, England, TF3 3BJ
 T: +44 (0)1952 459 338
 W: www.affco-flowcontrol.com
 E: info@affco-flowcontrol.co.uk



DN350~DN400

DN450~DN650

Dimensions

DN	NPS	ΦA	E	F	B	C	ΦH	D	N (PCD) [ISO 5211]	n x O	G	L	K	Weight Appr. (KG)
40	1 1/2"	40	11	25	61	113	90	106	Φ70[F07]	4xΦ9	12	NA	NA	7.2kg
50	2"	50	11	25	67	118	90	108	Φ70[F07]	4xΦ9	12	NA	NA	8kg
65	2 1/2"	65	11	25	74	126	90	112	Φ70[F07]	4xΦ9	12	NA	NA	8.8kg
80	3"	80	11	25	82	133	90	114	Φ70[F07]	4xΦ9	14	NA	NA	10kg
100	4"	102	11	25	100	147	90	127	Φ70[F07]	4xΦ9	14	NA	NA	13.1kg
125	5"	125	14	28	112	160	90	140	Φ70[F07]	4xΦ9	14	NA	NA	18kg
150	6"	150	14	28	134	180	90	140	Φ70[F07]	4xΦ9	14	56	5.4	23.1kg
200	8"	200	17	28	172	204	90	152	Φ70[F07]	4xΦ9	14	132	25	43kg
250	10"	250	22	30	203	245	125	165	Φ102[F10]	4xΦ11	15	190	43	52kg
300	12"	300	22	30	223	270	125	178	Φ102[F10]	4xΦ11	15	246	63	77kg
350	14"	336	27	29	282	315	150	190	Φ125[F12]	4xΦ14	20	277	73	95kg
400	16"	400	27	29	307	350	150	216	Φ125[F12]	4xΦ14	20	332	90	101kg
450	18"	450	36	38	352	375	175	222	Φ140[F14]	4xΦ18	20	388	112	154kg
500	20"	500	36	38	387	415	175	229	Φ140[F14]	4xΦ18	20	441	134	170kg
550(PN10)	22"	550	36	38	420	480	210	267	Φ140[F14]	4xΦ18	25	478	141	200kg
550(PN16)	22"	550	46	48	420	480	210	267	Φ140[F14]	4xΦ18	25	478	141	205kg
600	24"	600	46	48	452	465	210	267	Φ165[F16]	4xΦ22	25	538	167	231kg
650	26"	650	46	48	475	530	210	292	Φ165[F16]	4xΦ22	30	573	176	311kg
700(PN10)	28"	700	70	110	489	555	210	292	Φ165[F16]	4xΦ22	25	624	198	365kg
700(PN16)	28"	700	80	120	489	555	300	292	Φ254[F25]	8xΦ18	30	624	198	420kg
800(PN10)	32"	800	80	120	549	620	300	318	Φ254[F25]	8xΦ18	30	723	236	440kg
800(PN16)	32"	800	100	120	549	620	300	318	Φ254[F25]	8xΦ18	30	723	236	510kg
900(PN10)	36"	900	90	120	614	675	300	330	Φ254[F25]	8xΦ18	30	825	279	671kg
900(PN16)	36"	900	110	160	614	675	300	330	Φ254[F25]	8xΦ18	30	825	279	760kg
1000(PN10)	40"	1000	90	120	664	740	300	410	Φ254[F25]	8xΦ18	30	897	288	990kg
1000(PN16)	40"	1000	120	160	664	740	300	410	Φ254[F25]	8xΦ18	30	897	288	1050kg
1100(PN10)	44"	1100	105	120	740	800	350	410	Φ298[F30]	8xΦ22	40	942	332	1180kg
1100(PN16)	44"	1100	125	160	740	800	350	410	Φ298[F30]	8xΦ22	40	942	332	1250kg
1200(PN10)	48"	1200	110	160	802	875	350	470	Φ298[F30]	8xΦ22	40	1075	352	1440kg
1200(PN16)	48"	1200	130	160	802	875	350	470	Φ298[F30]	8xΦ22	40	1075	352	1580kg
1300(PN6)	52"	1300	110	160	935	990	415	490	Φ356[F35]	8xΦ33	35	1180	394	-
1300(PN10)	52"	1300	110	160	935	990	415	490	Φ356[F35]	8xΦ33	35	1180	394	-
1400(PN6)	56"	1400	140	160	1020	1000	415	530	Φ356[F35]	8xΦ33	35	1273	425	-
1400(PN10)	56"	1400	140	160	1020	1000	415	530	Φ356[F35]	8xΦ33	35	1273	425	-
1500(PN6)	60"	1500	150	160	1054	1050	415	570	Φ356[F35]	8xΦ33	40	1361	453	-
1500(PN10)	60"	1500	150	160	1054	1050	415	570	Φ356[F35]	8xΦ33	40	1361	453	-
1600(PN6)	64"	1600	160	180	1080	1150	415	600	Φ356[F35]	8xΦ33	50	1457	488	-
1600(PN10)	64"	1600	160	180	1080	1150	415	600	Φ356[F35]	8xΦ33	50	1457	488	-
1800(PN6)	72"	1800	180	200	1186	1200	475	670	Φ406[F40]	8xΦ39	45	1643	552	-
1800(PN10)	72"	1800	180	200	1186	1200	475	670	Φ406[F40]	8xΦ39	45	1643	552	-
2000(PN6)	80"	2000	200	200	1370	1425	560	760	Φ483[F48]	12xΦ39	60	1794	594	-
2000(PN10)	80"	2000	200	200	1370	1425	560	760	Φ483[F48]	12xΦ39	60	1794	594	-